



AIRWORTHINESS BULLETIN

AWB 57-015 Issue 3 – 3 November 2016

Cessna 300 and 400 Series Wing Front Spar Lower Attachment Fittings

1. Effectivity

All Cessna 400, (except models 404 and 441) and 310 and 340 series aircraft incorporating J&R Aerospace wing front spar lower attachment fittings P/N JRA-445-1.

2. Purpose

The original and Issue 2 of this AWB were to alert operators and maintainers of premature cracking in a Cessna 402C wing attachment fitting manufactured by J&R Aerospace.

This AWB is re-issued to ask operators of aircraft listed in the effectivity of this AWB, to advise CASA if their aircraft has a J&R manufactured wing fitting in any position and to advise CASA (via the form attached on page 3 of this AWB) of the part number and batch number marked on the part adjacent to the part number.

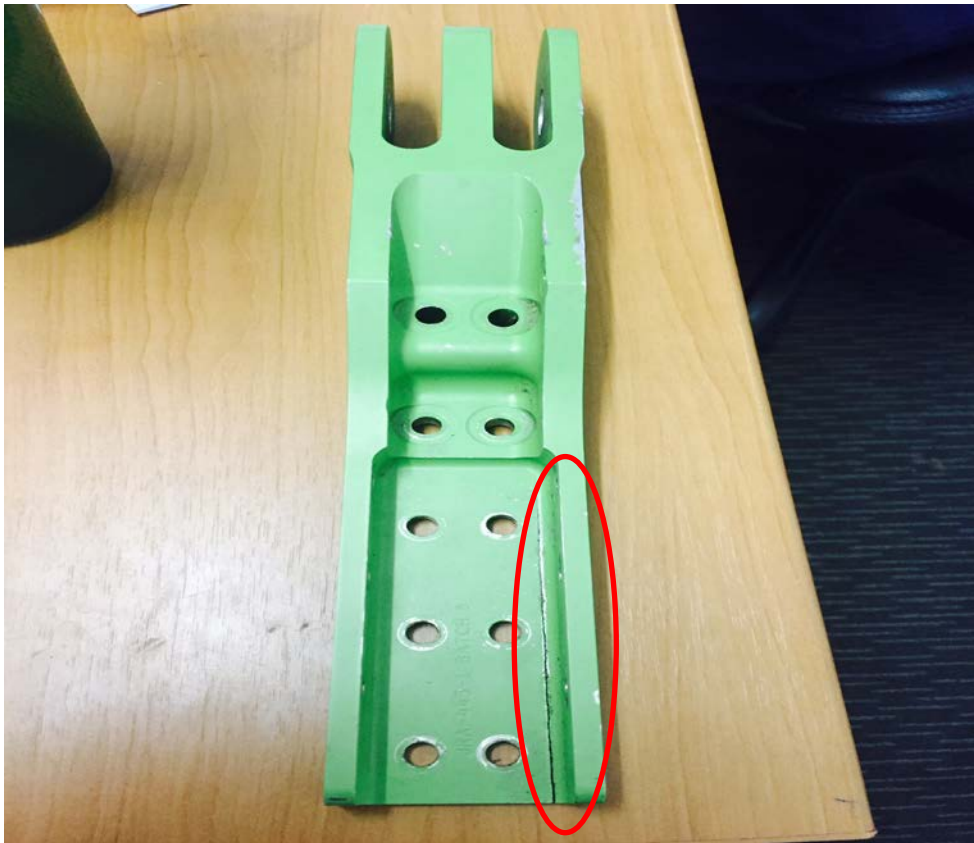


Figure 1



3. Background

During an inspection of the wing attachment spar fittings in accordance with AD/CESSNA 400/92, a J&R Aerospace carry through spar fitting P/N JRA-445-1 with 2,831 flight hours' time since new (TSN), was found to have a 10cm crack (4 inches) extending from the outboard end of the fitting as shown in Figure 1.

This AWB is issued as interim advice, pending the results of further investigations to identify the factors involved, including service history, crack initiation time, and crack progression rate.

4. Recommendations

It is recommended that operators of affected Cessna 300 and 400 aircraft incorporating J&R Aerospace fittings inspect for evidence of cracking or corrosion, particularly in the location shown in Figure 1.

It is also requested that the Form attached on page 3 of this AWB is completed and returned to AirworthinessBulletin@casa.gov.au

5. Reporting

Report all Cessna 300 and 400 wing attachment fitting defects via the CASA defect reporting system.

6. Enquiries

Enquiries with regard to the content of this Airworthiness Bulletin should be made via the direct link email address:

AirworthinessBulletin@casa.gov.au

or in writing, to:

Airworthiness and Engineering Standards Branch
Standards Division
Civil Aviation Safety Authority
GPO Box 2005, Canberra, ACT, 2601



Cessna 300 and 400 Series Wing Front Spar Lower Attachment Fittings Inquiry Form

Aircraft Type / Variant	
Aircraft TSN	
SIDs inspection of these fittings last completed (date)	
Right wing fitting part number / batch number	
Right wing fitting TSN	
Left wing fitting part number / batch number	
Left wing fitting TSN	
Visible corrosion or disturbance to coating on any fittings Y/N If yes, please describe the extent / location and include a diagram or photograph if possible	

Please return completed form to: AirworthinessBulletin@casa.gov.au