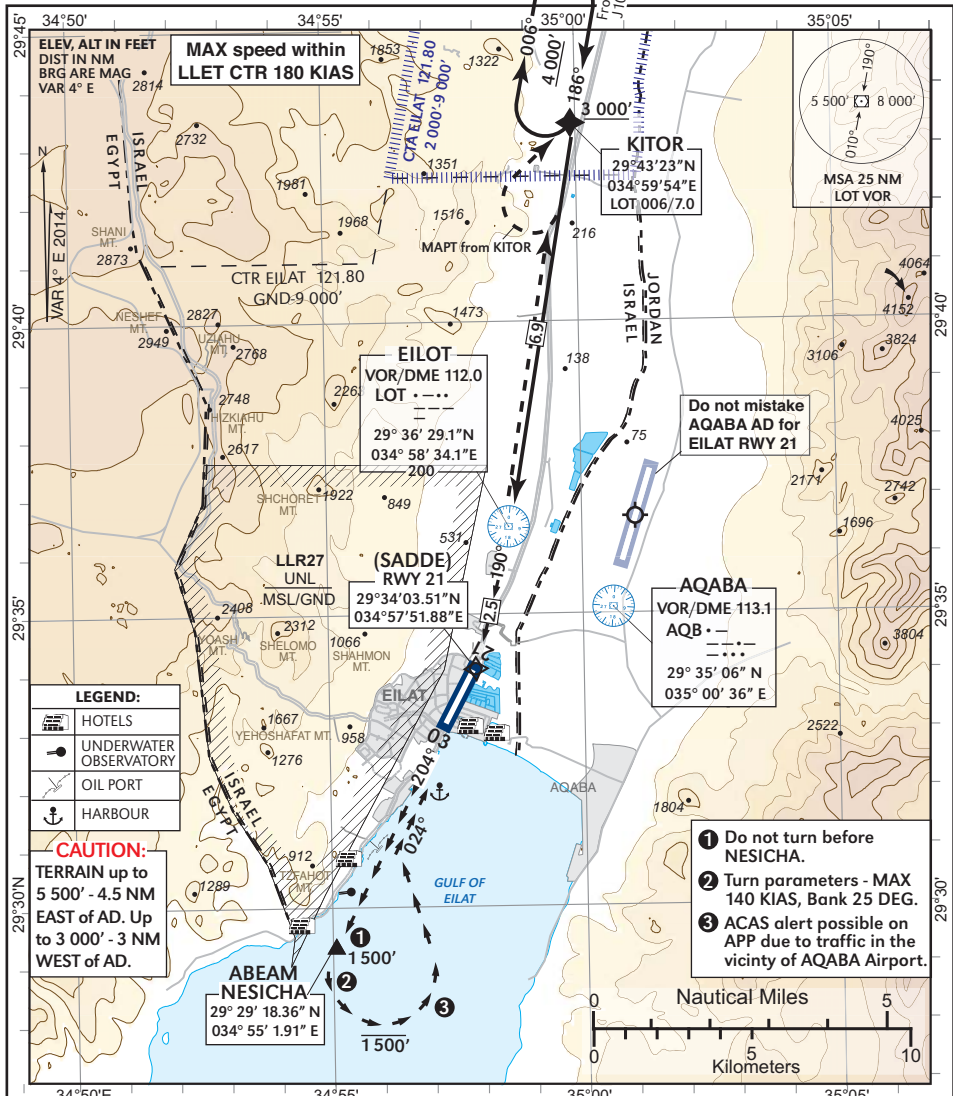


VISUAL APPROACH CHART
(with prescribed track)

AERODROME ELEV 43 ft
THR RWY 03 - ELEV 16 ft

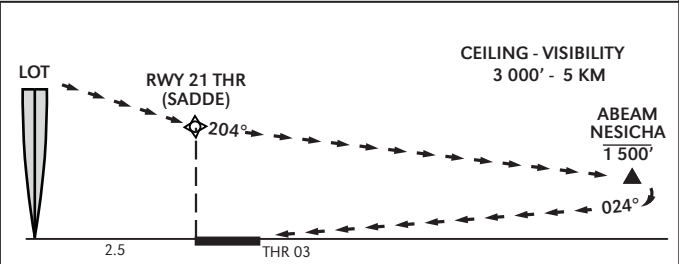
ACC 120.90
TWR 121.80
119.00

EILAT
NESICHA APPROACH
RWY 03



MISSED APPROACH (prior to KITOR):
If visual reference with terrain not established at KITOR, maintain 4 000', and hold at KITOR.

CANCELED APPROACH/GO AROUND (after KITOR):
Continue along the prescribed track and heights, after joining final segment heading at 1 500', climb to 3 000' via THR 21 to KITOR and follow ATC instructions. If unable to comply maintain ALT and contact ATC.



CHANGES: CTR, frequencies, restricted area, routing