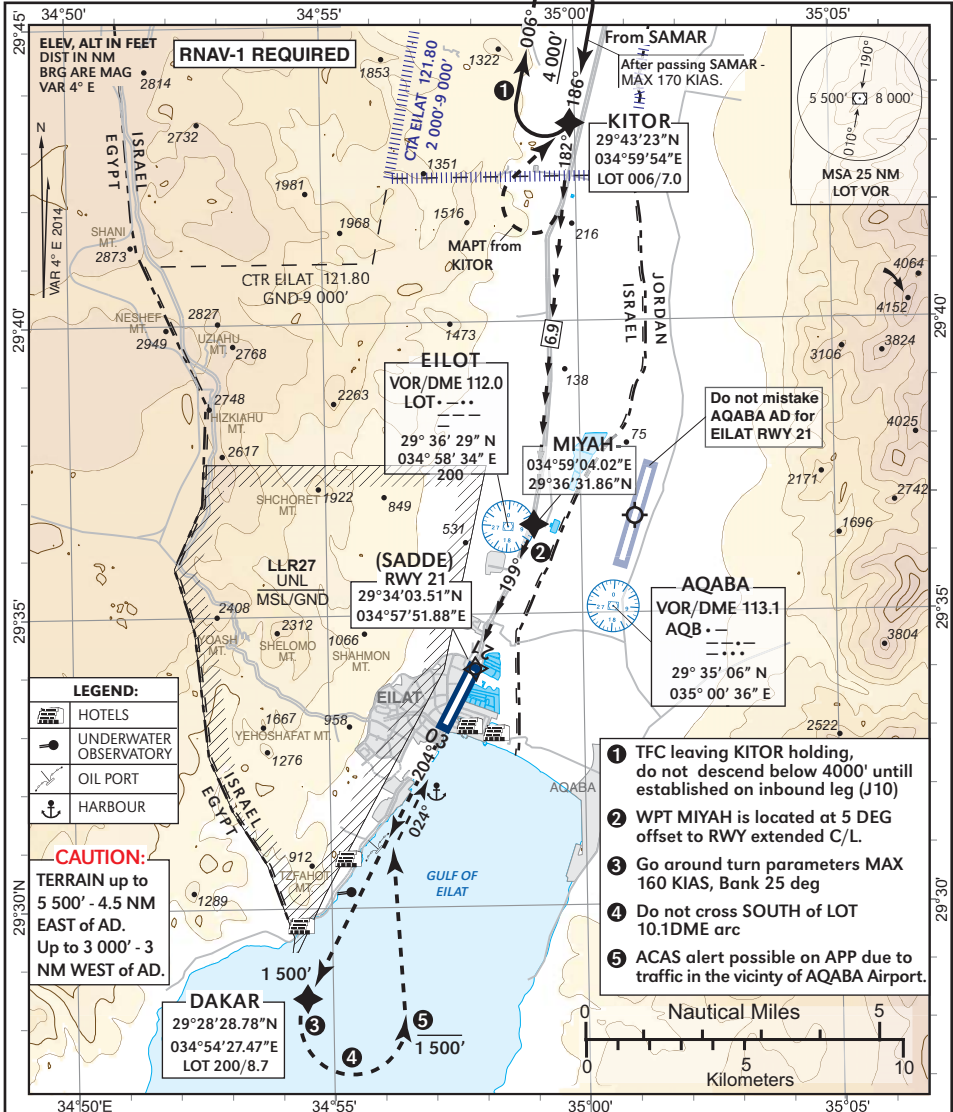


VISUAL APPROACH CHART
with prescribed RNAV track

AERODROME ELEV 43 ft
THR RWY 21 - ELEV 43ft

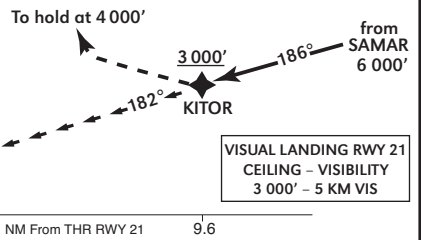
ACC 120.90
TWR 121.80
119.00

EILAT
KITOR Y
APPROACH RWY 21



CANCELED APPROACH/GO AROUND
on the visual segment of the approach (after passing KITOR): Continue along the prescribed track, at **DAKAR** turn **LEFT** at 1 500', to intercept **RWY 03** extended CL, only after established on **RWY 03** CL heading, climb to 3 000' via **SADDE** to **KITOR** and follow ATC instructions. IF unable to comply - maintain ALT and contact ATC.

MISSED APPROACH
If visual reference with terrain not established at **KITOR**, maintain heading, climb to 4 000', turn **RIGHT** and hold at **KITOR**.



CHANGES: CTR, frequencies, restricted area, routing