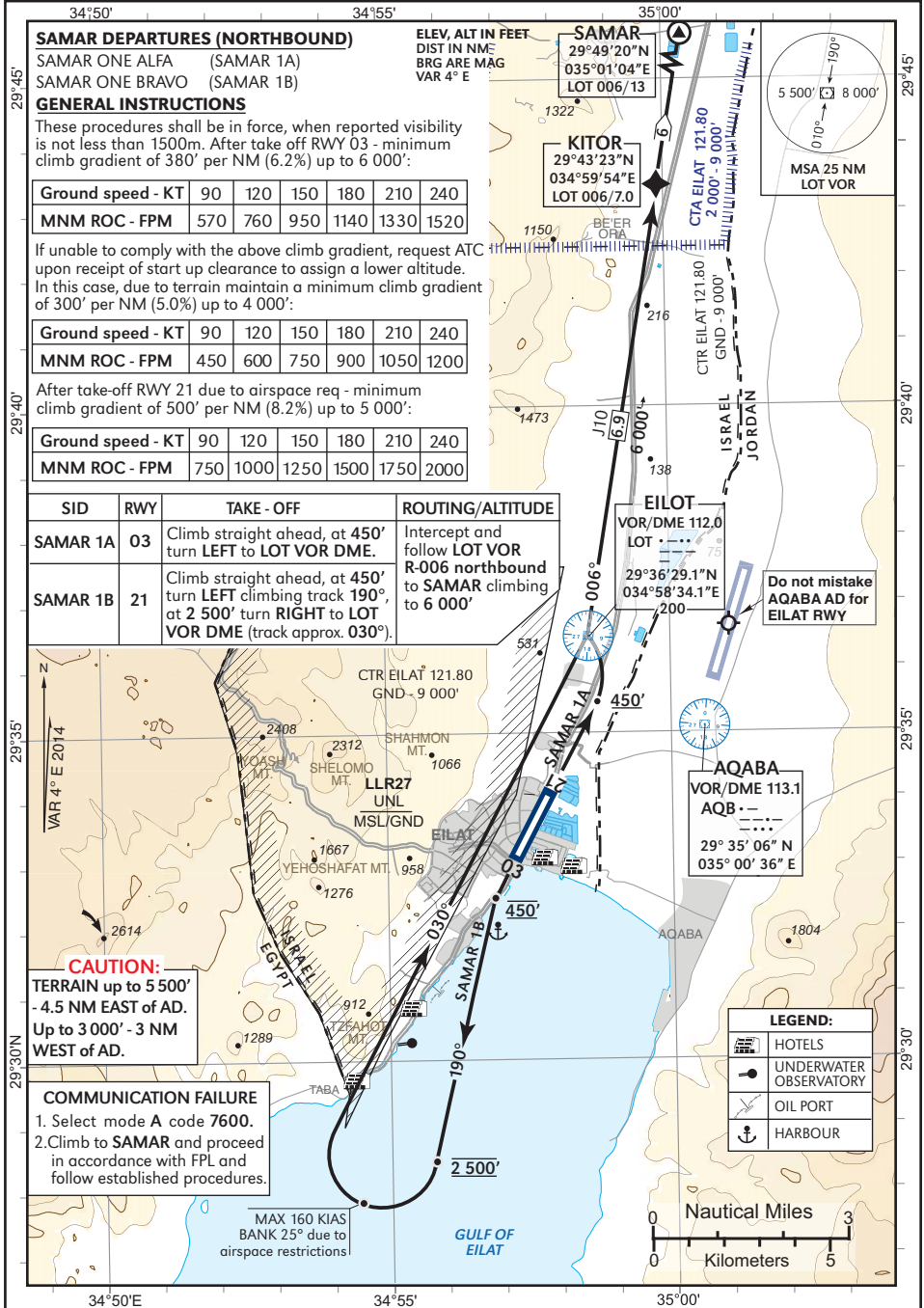


STANDARD DEPARTURE
CHART - INSTRUMENT (SID)

AERODROME ELEV 43 ft

ACC 120.90
TWR 121.80
119.00

EILAT
RWYS 03, 21
SAMAR 1A, SAMAR 1B



SAMAR DEPARTURES (NORTHBOUND)

SAMAR ONE ALFA (SAMAR 1A)
SAMAR ONE BRAVO (SAMAR 1B)

GENERAL INSTRUCTIONS

These procedures shall be in force, when reported visibility is not less than 1500m. After take off RWY 03 - minimum climb gradient of 380' per NM (6.2%) up to 6 000':

Ground speed - KT	90	120	150	180	210	240
MNM ROC - FPM	570	760	950	1140	1330	1520

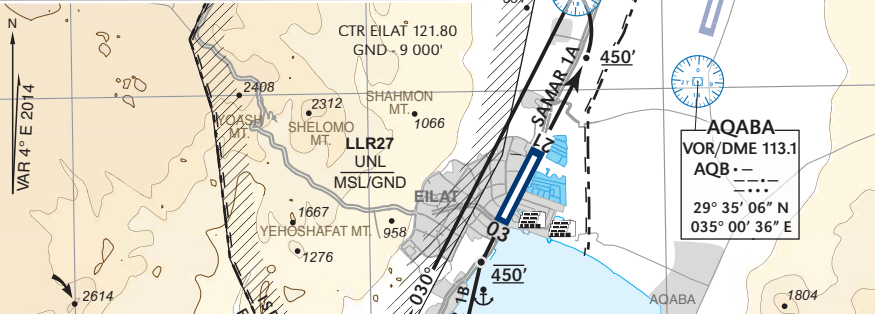
If unable to comply with the above climb gradient, request ATC upon receipt of start up clearance to assign a lower altitude. In this case, due to terrain maintain a minimum climb gradient of 300' per NM (5.0%) up to 4 000':

Ground speed - KT	90	120	150	180	210	240
MNM ROC - FPM	450	600	750	900	1050	1200

After take-off RWY 21 due to airspace req - minimum climb gradient of 500' per NM (8.2%) up to 5 000':

Ground speed - KT	90	120	150	180	210	240
MNM ROC - FPM	750	1000	1250	1500	1750	2000

SID	RWY	TAKE - OFF	ROUTING/ALTITUDE
SAMAR 1A	03	Climb straight ahead, at 450' turn LEFT to LOT VOR DME.	Intercept and follow LOT VOR R-006 northbound to SAMAR climbing to 6 000'
SAMAR 1B	21	Climb straight ahead, at 450' turn LEFT climbing track 190°, at 2 500' turn RIGHT to LOT VOR DME (track approx. 030°).	

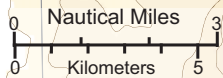


CAUTION:
TERRAIN up to 5 500'
- 4.5 NM EAST of AD.
Up to 3 000' - 3 NM
WEST of AD.

COMMUNICATION FAILURE
1. Select mode A code 7600.
2. Climb to SAMAR and proceed in accordance with FPL and follow established procedures.

LEGEND:

	HOTELS
	UNDERWATER OBSERVATORY
	OIL PORT
	HARBOUR



CHANGES: CTR, frequencies, restricted area, routing