

STANDARD INSTRUMENT DEPARTURE (TO ATS ROUTES)

TRANSITION ALTITUDE
NIL

TWR 118.45
128.45
PLUTO 127.10

ROSH PINA
RWYS 15, 33
DESHE 1A DESHE 1B

BEARINGS, TRACKS AND RADIALS ARE MAGNETIC
ALTITUDES AND ELEVATIONS ARE IN FEET
DISTANCES IN NAUTICAL MILES

DESHE DEPARTURES (SOUTHBOUND)

DESHE ONE ALFA (DESHE 1A)
DESHE ONE BRAVO (DESHE 1B)

GENERAL INSTRUCTIONS

These departures require minimum climb gradients up to 5000' as follows:

RWY 15 - 400' per NM (6.6%):

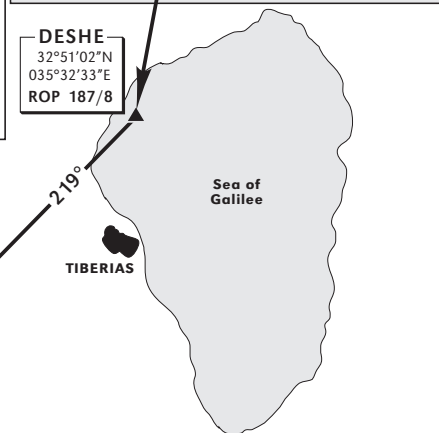
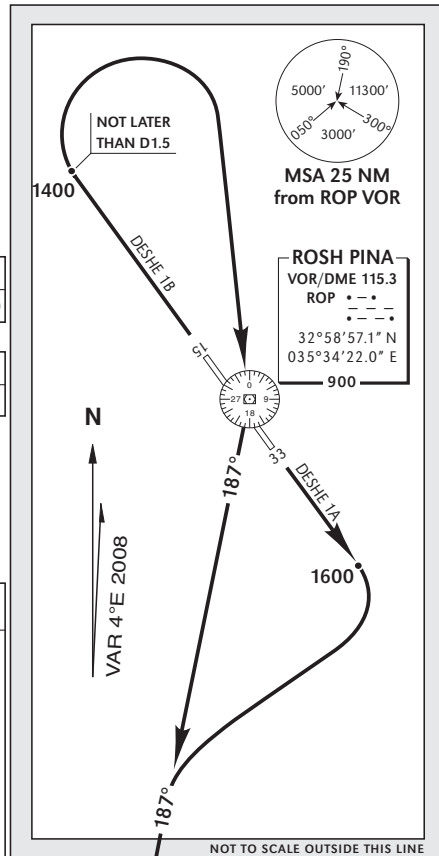
Ground speed - KT	90	110	130	150	180
MNM ROC - FPM	600	735	870	1000	1200

RWY 33 - 535' per NM (8.8%):

Ground speed - KT	90	110	130	150	180
MNM ROC - FPM	805	980	1160	1340	1605

These procedures shall be in force for aircraft operating under chapter 13 (FAR 121), when reported visibility is not less than 1500m (day) or 3000m (night) and ceiling is not below 1000' AAL (1884' QNH). For all other aircraft, these procedures shall not be in force when visibility is less than 5000m or ceiling is below 1500' AAL (2 384' QNH).

SID	RWY	TAKE - OFF	ROUTING ALTITUDE
DESHE 1A	15	Climb straight ahead, at 1600' turn RIGHT to intercept and follow RDL 187 ROP VOR to DESHE .	Cross DESHE at or climbing to 5000' , proceed onto J14 to NAT VOR in accordance with ATS routes chart (ENR 6-1).
DESHE 1B	33	Climb straight ahead, at 1400' but not later than ROP DME 1.5 turn RIGHT , proceed via ROP VOR/DME to intercept and follow RDL 187 ROP VOR to DESHE .	



COMMUNICATION FAILURE

1. Select mode 3 code 7600.
2. Climb to 5000' to **DESHE** and
3. Proceed in accordance with FPL and follow established procedure.

CHANGES: Ceiling and visibility parameters changed