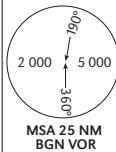


DEPARTURE TO ATS
ROUTES - VISUAL

TRANSITION ALT 18 000
AD ELEV 43 ft

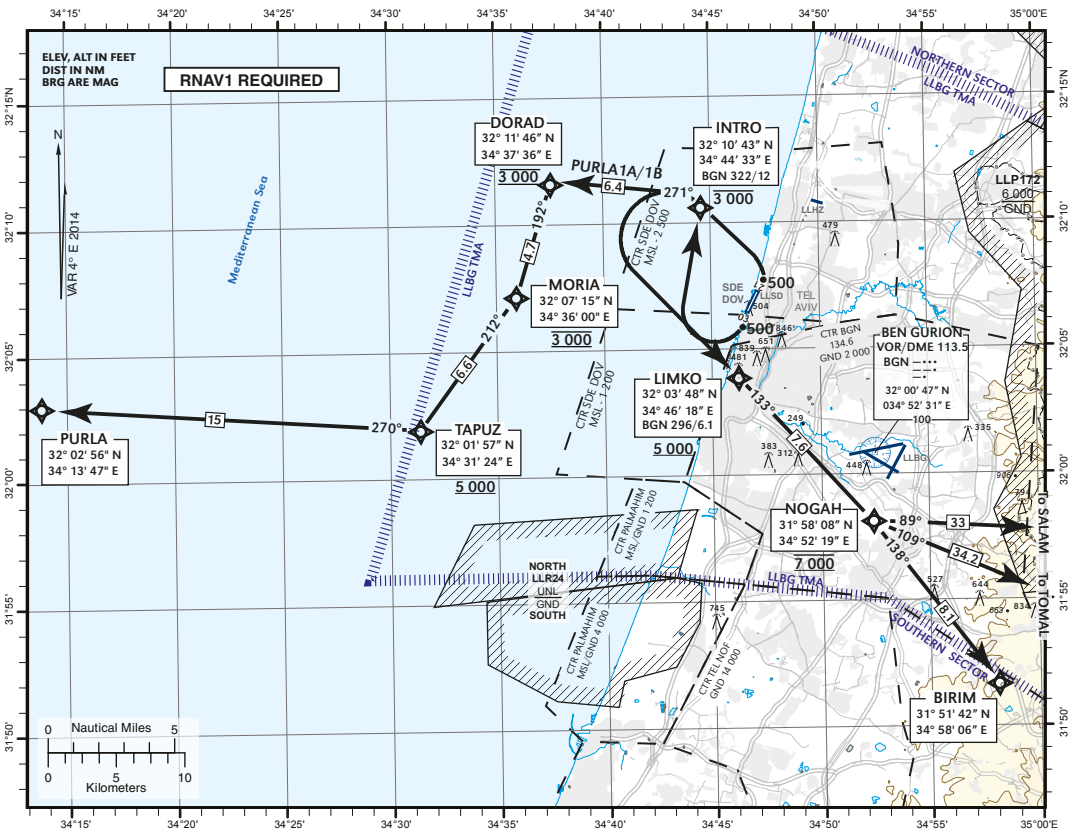
ATS
TWR (SDE DOV) 122.90
BEN GURION DEP 120.50
BEN GURION TMA 119.50

TEL AVIV / SDE DOV (LSD)
RWY 03, 21
SALAM 1A/1B, TOMAL 1A/1B,
BIRIM 1A/1B, PURLA 1A/1B



GENERAL INSTRUCTIONS

Pilots accepting a visual departure shall maintain own terrain separation until turning to INTRO.
SALAM 1A/TOMAL1A/ BIRIM 1A/ PURLA 1A departures requires ceiling not below 800 ft and visibility not less than 800m.
SALAM 1B / TOMAL 1B / BIRIM 1B / PURLA 1B departures requires ceiling not below 800 ft and visibility not less than 2,000m.
These departures require a minimum climb gradient up to 3000 ft as follows:
Take-off RWY 21 - 350 ft per NM (5.7%).
Take-off RWY 03 - 420 ft per NM (6.8%).
If unable to comply - advise ATC.
Departure in VMC will conduct under VFR, departure in IMC will conduct under IFR



NON RNAV ACFT -
Advise "NON-RNAV" to ATC before start up.
SALAM 1A/1B, TOMAL 1A/1B, BIRIM 1A/1B - after INTRO, turn LEFT 140 and expect radar vectors.
PURLA 1A/1B - after INTRO, turn LEFT 270 and expect radar vectors.

Ground speed	KT	ROC				
		90	110	130	150	180
RWY 03 - 420 MNM	FPM	630	770	910	1050	1260
RWY 21 - 350 MNM	FPM	525	640	760	875	1050

RWY	TAKE - OFF	
	Altitude	Procedure
03	at 500 ft	turn LEFT Climbing to INTRO.
21	at 500 ft	turn RIGHT Climbing to INTRO.

CHANGES: Revised chart