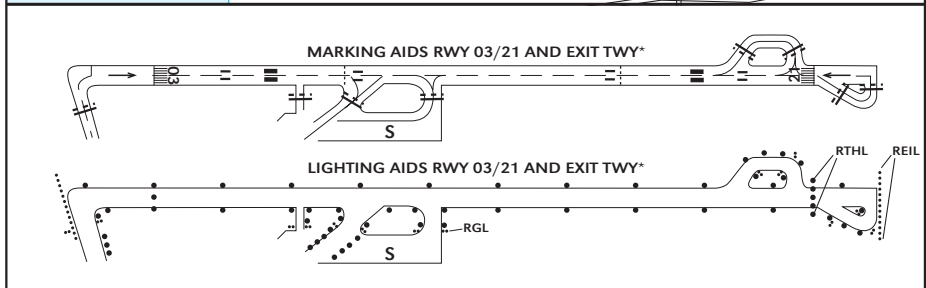
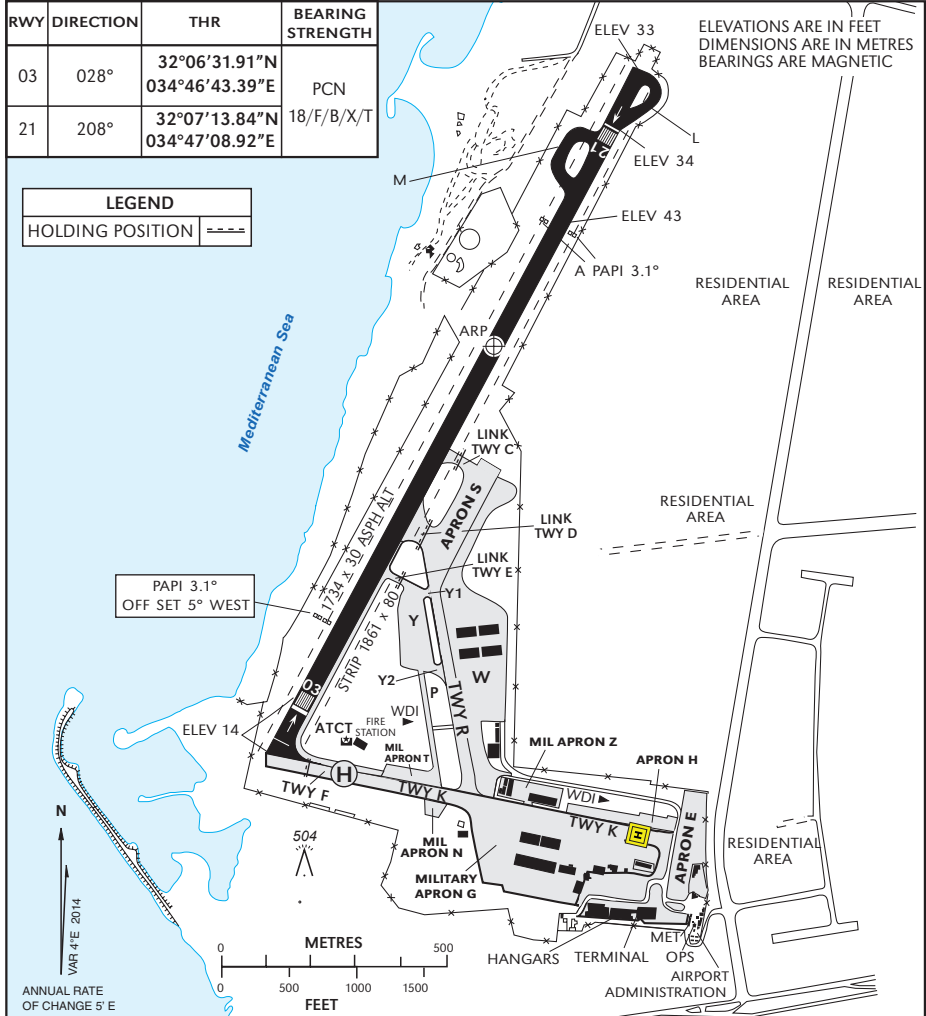


AERODROME 32°06'51"N
CHART - ICAO 034°46'55"E **ELEV 43 ft** **TWR 124.00** **TEL-AVIV/SDE-DOV**
GND 121.05 **(LLSD)**

RWY	DIRECTION	THR	BEARING STRENGTH
03	028°	32°06'31.91"N 034°46'43.39"E	PCN
21	208°	32°07'13.84"N 034°47'08.92"E	18/F/B/X/T

ELEVATIONS ARE IN FEET
 DIMENSIONS ARE IN METRES
 BEARINGS ARE MAGNETIC

LEGEND	
HOLDING POSITION	----



CHANGES: Apron E added, Apron J withdrawn, MAG variation