

STANDARD ARRIVAL CHART-
INSTRUMENT (STAR)

TRANSITION ALT NIL

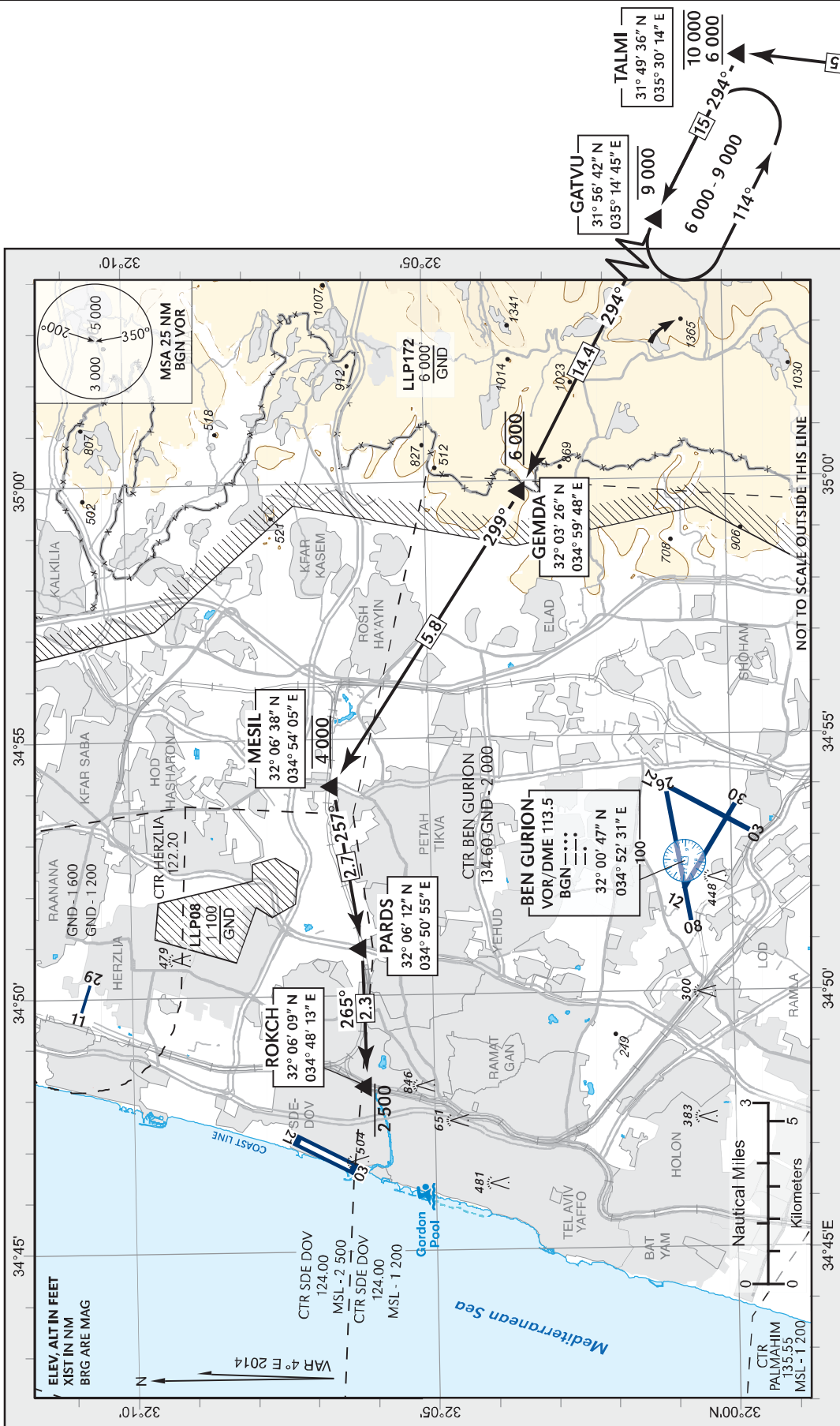
ACC	120.90
TMA (BEN GURION)	119.50
TWR (SDE DOV)	124.00

TEL - AVIV / SDE DOV
RWYS 21/03
TOMAL 1

שדה דב

CHANGES: Transition ALT

נספח ג-5



REMARKS
Descend from GEMDA (6 000) to MESIL (4 000')
requires gradient of 400 per NM (6.5%).
Descend from MESIL (4 000) to ROKCH (2 500)
requires gradient of 300 per NM (5%).
ACAS alerts possible from low CVFR traffic in
LLSD and LLHZ vicinity up to 2 000.

STAR	ROUTING / ALTITUDE
TOMAL 1	From TOMAL to TALMI - GATVU - GEMDA - MESIL - PARDS - ROKCH. Cross GATVU at or below 9 000, GEMDA at 6 000, MESIL at 4 000. Cross ROKCH at or below 2 500. Descending below 3 500 must be under CVFR. If visual reference to terrain is not established, climb to 4 000 and follow ATC instructions.

עדכון 1/16

רשות התעופה האזרחית

28 אפריל 2016